

Figure S1. Endoscopy images demonstrating: (a) high-risk features, (b) low-risk features, (c) Ulcerative colitis like disease, (d) Crohn's like disease; yellow arrow demonstrates large deep mucosal ulceration surrounded by normal mucosa.

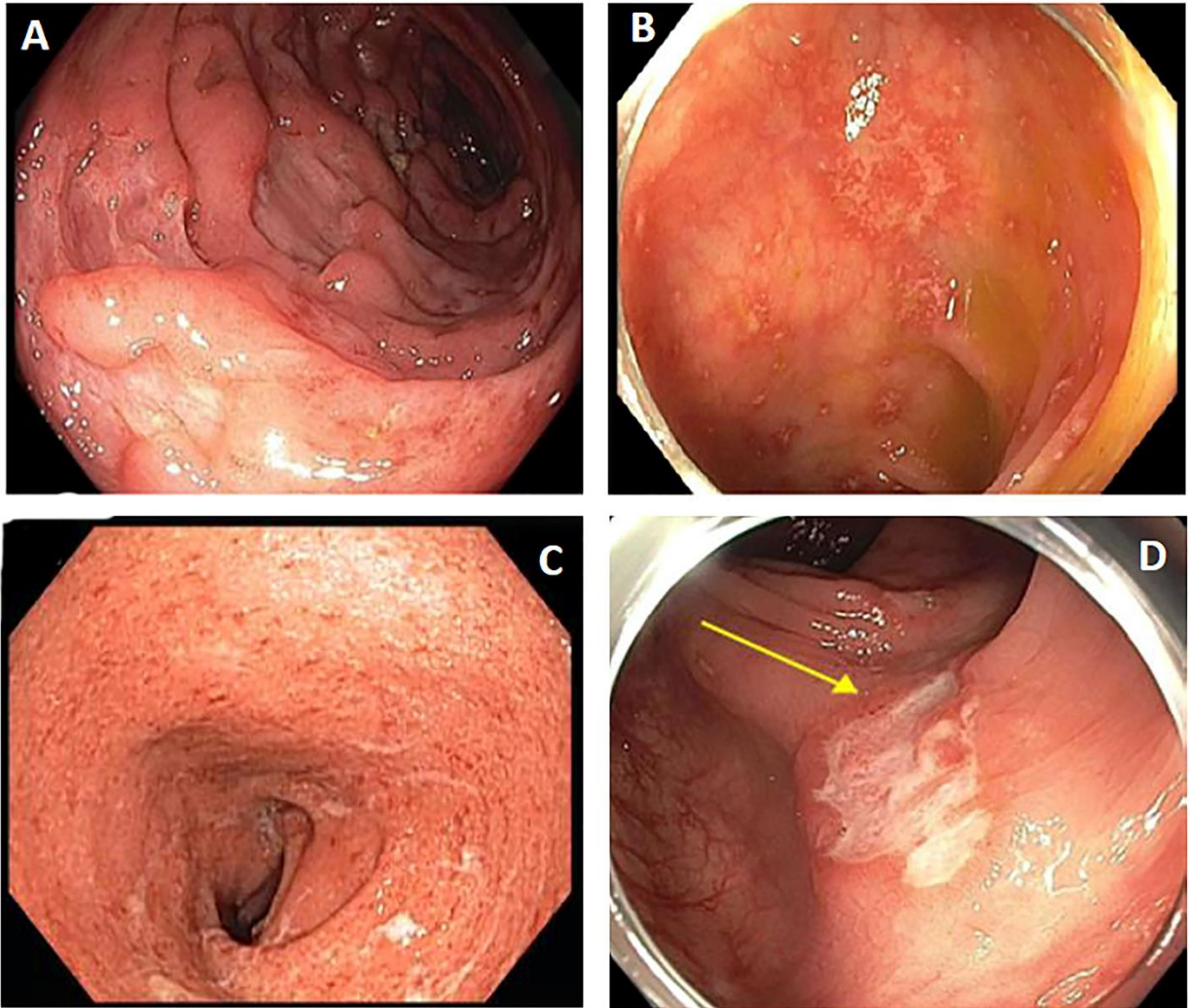


Figure S2. Histopathology images demonstrating: (a) colonic mucosa with architecture distortion, basal plasmacytosis (white arrow), cryptitis (yellow arrow) and crypt abscess (red arrow), (b) Colonic mucosa with mild architecture distortion and minimal features of active inflammation.

